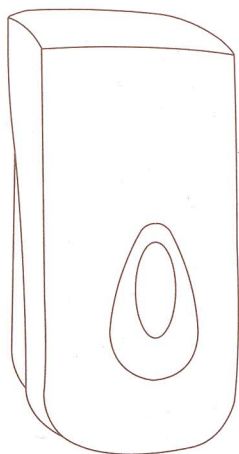


USER MANUAL

SOAP DISPENSER & FOAM SOAP DISPENSER SPRAY DISINFECTION MACHINE



Foam pump



Spray pump



Soap pump



Please read user manual carefully before using.

◆refer to figure (2)

the product has a liquid soap, foam, spray three functions, the replacement of different liquids to replace the corresponding pump head (such as: a soap bubble you need to put liquid soap into the pump head for into).

◆proposal

As different soap concentration is different regions, resulting in inability to use this product in some area's the liquid soap (press any soap come out), if we find the above, it advise to use the water to press it can be come out liquid. you can pour out residual water, then load the required soap.

Note: This product is 100% in the production process into clear water testing, water droplets if the product found is normal.

◆notes & maintenance

- to prevent any objects blocking the fluid orifice, if you find that the container is dirty or has debris, rinse the soap clean and replacement.
- If long time do not use soap dispenser, the liquid soap may be so solidified agent.
- Do not use corrosive chemical cleaning products, so as to avoid the appearance of surface damage and deformation.
- If the product has leakage problems, which can replace the pump head.

products are steel materials from refined, durable. the touch of button can satisfy you want the effect, that is, save money and effort, but also environmental protection.it is hotels, luxury clubhouse, bath center, beauty salon and the best choice for families

◆ specifications

Dimensions	L115XH110XH245mm		
Capacity	1000ml		
The liquid	1.5ml(liquid)	0.4ml(foam)	0.3ml(spray)
Weight	469g		
Material	ABS		

◆ operation icon

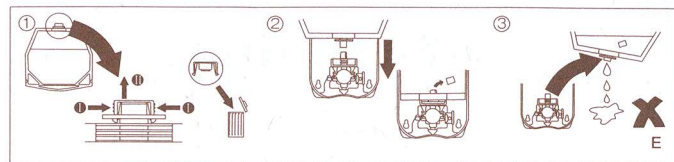
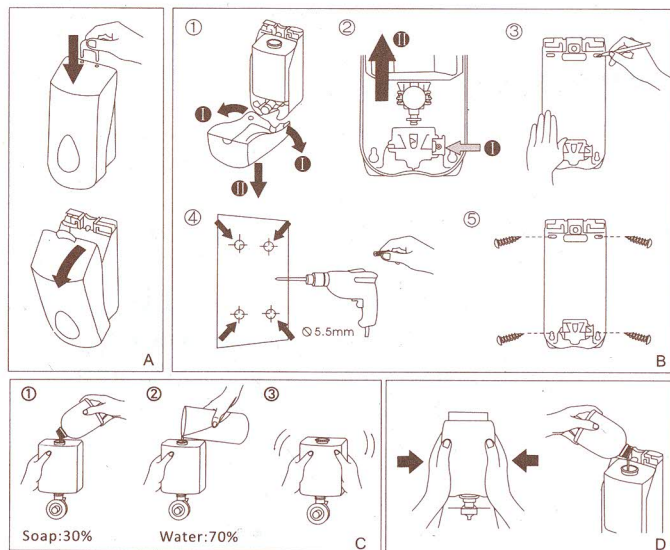


Fig (1)

Step 1-Refer to Figure A in Fig(1), using the supplied key will open the surface shell.

Step 2-Refer to Figure B in Fig(1):

- ①: direction of the arrow to the front panel, and the bottom shell separation.
- ②: first push the pump head to the left hand button, and then take out the bottle.
- ③: use the wall as a template, a pen, mark the wall to drill the mounting holes.
- ④: use the impact of drilling holes in the marked place with the supplied rubber plugs inserted into holes.
- ⑤: bottom shell with screws to fasten the mounting location.

Step 3-Refer to Figure C in Fig(1),if you bought the Bubble machine, you need to change the soap water into foam water, you can ① put 30% soap water into bottle ② than put into 70% clean water ③ cover the lip and mix the liquid.

Step 4-Refer to Figure D in Fig(1),after install the bottle you can put into the liquid.

Step 5-Refer to Figure E in Fig(1),Products can use disposable bag.



Foam pump



Spray pump



Soap pump

Fig (2)